



The TURKISH EDUCATION SYSTEM

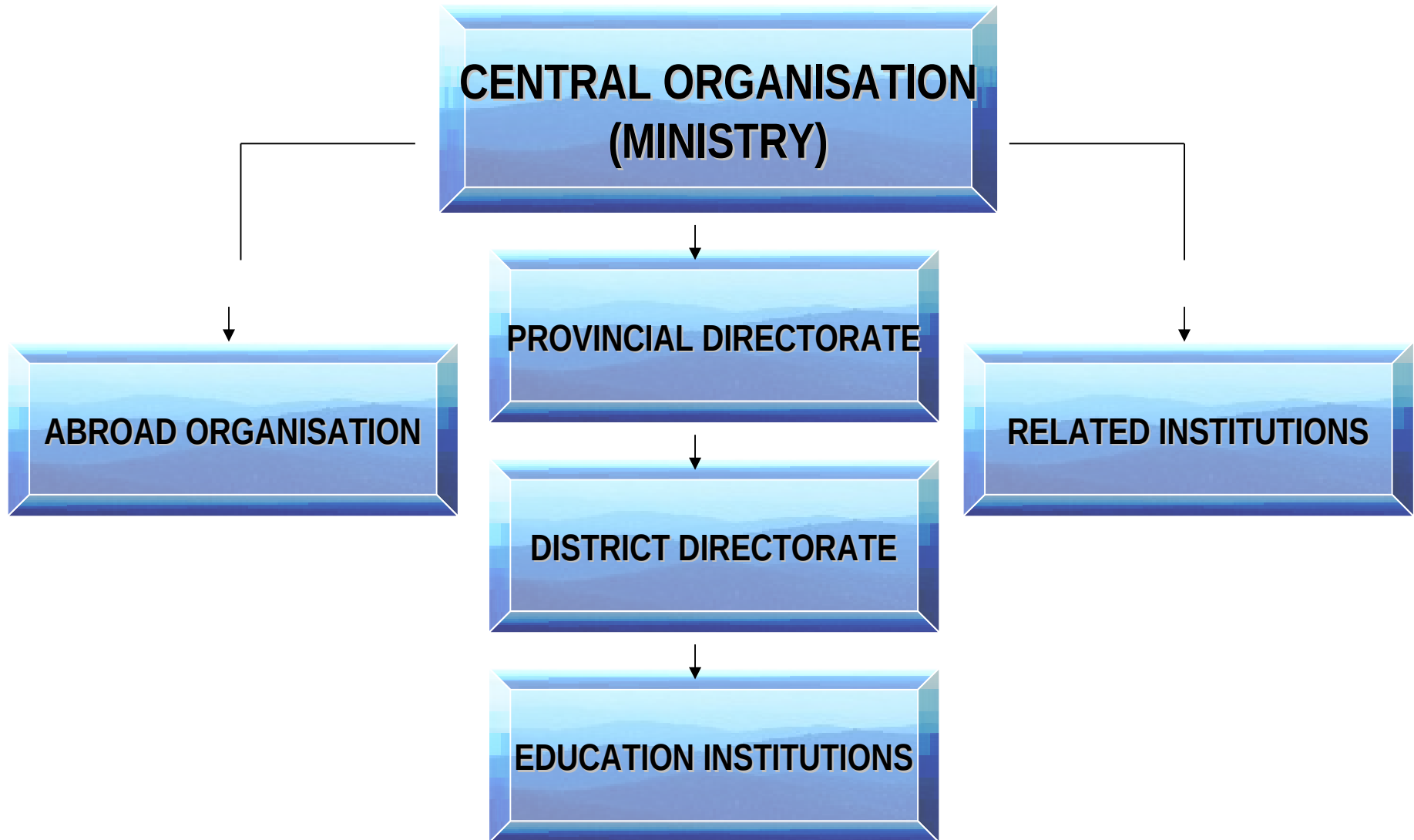


Istanbul Provincial Directorate for National Education

MINISTRY of NATIONAL EDUCATION



Organization of the Ministry



Central Organisation

Operational Units, which all related departments, sub-organisations operate under these units.

- Ministry Office
- Board of Education
- Master Units
- Subsidiary Units
- Consultancy and Inspection Units

Provincial Organisations

- 81 Provinces (cities)
- 850 Districts (towns)

Duty fields of Provincial Directorates for National Education

*Management

*Staff

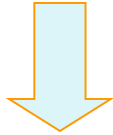
*Education and Training

*Budget-Investment

*Research-Planning-Statistics

*Inspection-Guidance-Investigation

GENERAL STRUCTURE OF THE TURKISH EDUCATION SYSTEM

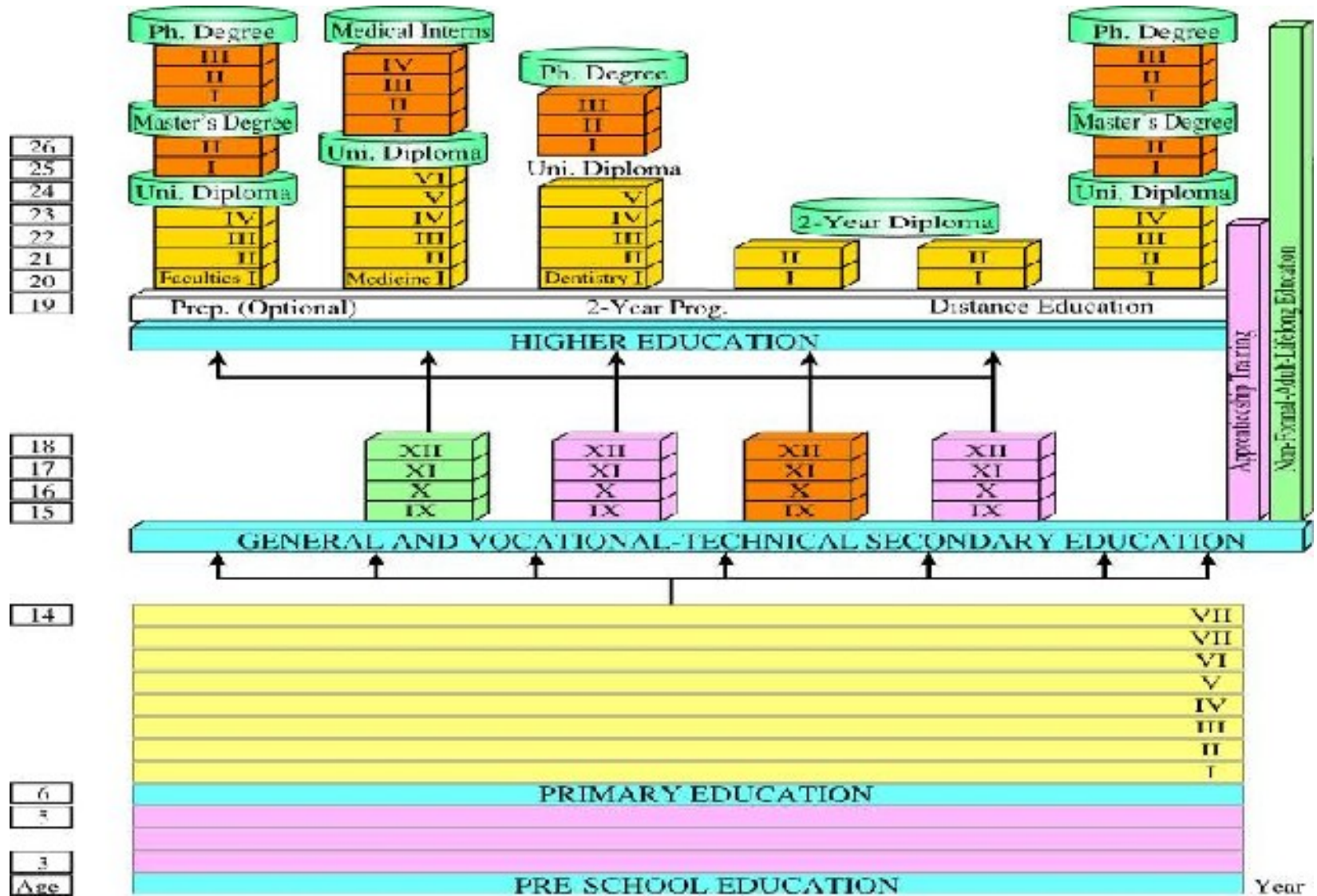


FORMAL EDUCATION



NON-FORMAL EDUCATION

TURKISH NATIONAL EDUCATIONAL SYSTEM CHART





FORMAL EDUCATION

FORMAL EDUCATION

PRESCHOOL

PRIMARY

SECONDARY

HIGHER EDUCATION

SPECIAL EDUCATION

Preschool Education

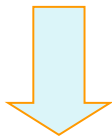
- Children between 36-72 month who have not reached the age of compulsory primary education.
- Not compulsory (optional)
- Pilot work in several provinces to enable pre-school education obligatory.
- Preschool education institutions established as;
 - * Independent infant schools (preschools)
 - * Nursery classes within primary schools
 - * Practice classes affiliated to other institutions (vocational schools for girls)

Primary Education

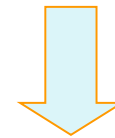
- Children between the ages of 6-14
- Compulsory (8 year) for all children, boys and girls
- 5 years elementary + 3 lower secondary level
- Given free of charge in public schools
- Students completing 8 years of education receive “Primary Education Diploma” and are eligible for secondary education.

SECONDARY EDUCATION

```
graph TD; A[SECONDARY EDUCATION] --> B[GENERAL SECONDARY EDUCATION]; A --> C[VOCATIONAL and TECHNICAL SECONDARY EDUCATION]
```



**GENERAL SECONDARY
EDUCATION**



**VOCATIONAL and TECHNICAL
SECONDARY EDUCATION**

Secondary Education

- Formal Secondary education is provided in
 - * general (academic career)
 - * vocational and technical (vocational training)education institutions
- 4 years (14-18 ages)

General Secondary Education

- General Secondary Schools
- Anatolian Secondary Schools
- Anatolian Teacher Training Secondary Schools
- Anatolian Fine Arts Secondary Schools
- Science Schools
- Schools of Social Sciences
- Sports Schools

Vocational & Technical Secondary Education

- Technical High School for Boys
- Technical High School for Girls
- Vocational High Schools of Trade and Tourism
- High Schools for Religious Education
- Vocational High Schools for Industry
- Vocational High Schools for Health

Private Education

As per Law no.625,

- Private education institutions include all types and levels of private schools, private classes and private courses.
- These institutions are under the inspection of Turkish Ministry of Education.

School Type	Nr of Schools	State/Private Ratio	
		İstanbul	Turkey
Preschool (Independent / Nursery Class)	574/123	21,40%	5,50%
Primary	236	4,20%	2,30%
General Secondary	256	13,30%	4,80%
Vocational and Technical Secondary	14	0,30%	0,09%

Special Education

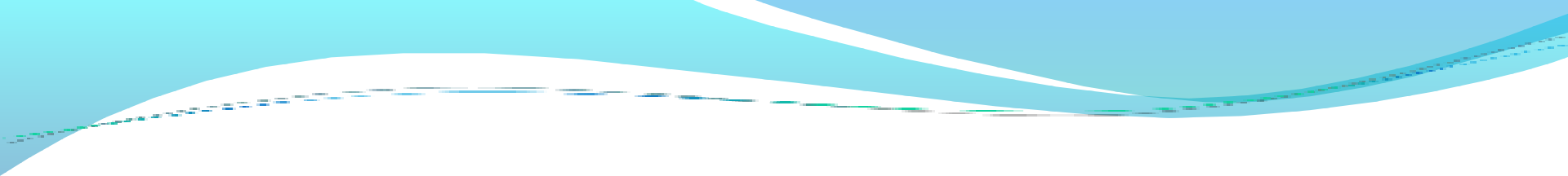
- It covers the education of mentally, physically, socially and emotionally handicapped children and adolescents between 0-18 ages, who cannot benefit from regular education.
- There are institutions for super talented children and adolescents; Science and Arts Centers.

Higher Education

- Higher education may follow upon successful completion of secondary education.
- Higher education institutions include universities, faculties, institutes, high schools, vocational high schools and conservatories.
- Higher education institutions offer at least 2-year education in order to meet the requirements of our country in terms of qualified human resources at various levels.
- Admission to higher education takes place through Central University Entrance Exam.



NON FORMAL EDUCATION



Involves all educational and training activities organized for the individuals that have never participated in formal education system or left school in one of the levels of this system.

Non-Formal Education

```
graph TD; A[Non-Formal Education] --> B[Public Training]; A --> C[Distance Education]; A --> D[Apprenticeship Education]; C --> E[Open Primary Schools]; C --> F[Open Secondary Schools(V/G)]; C --> G[Open University];
```

Public Training

Distance Education

Apprenticeship Education

Open Primary Schools

Open Secondary Schools(V/G)

Open University

ISTANBUL
Provincial Directorate
for
National Education



Organisation

- Provincial Directorate
 - * 1 Director
 - * 45 Vice Directorate
 - * 50 Officers
 - * 695 personel
 - * 306 primary school inspector
- District Directorate (39 districts)
 - * 39 Directors
 - * 109 Department Heads
 - * 3,185 personel

Statistics

2009-2010	Schools	Teachers	Students
Formal Education	3.136	93.000	2.456.882
Non-formal Education	2.221	20.194	1.159.129
Total	5.357	113.194	3.616.011

Preschool Education

NUMBER OF SCHOOLS – STUDENTS – SCHOOLING RATIO

School Type	Nr of Schools	Number of Students			Schooling Ratio (%)		
		Girls	Boys	Total	Girls	Boys	Total
Independent Preschool	69	4.114	4.478	8.592	18,01	18,84	18,44
Nursery class	1.968	32.880	36.627	69.507			
Total		36.994	41.105	78.099			

NUMBER OF TEACHERS

School Type	Permanent		Contractual(4/B)		Paid (4/C)		Total		Condition Based on Norm		
	Female	Male	Female	Male	Female	Male	Female	Male	Norm	Current	Need/Extra
Nursery Class	1.778	49	854	13			2.632	62	3554	2656	898
Preschool	256	34	151	4			407	38	540	362	178
Total	2.034	83	1.005	17			3.039	100	4094	3018	1076

Preschool Education

PUBLIC PRE-SCHOOL 2009-2010

Education Level	Number of School	Number of Student			Number of	Number of	Number of
		Boy	Girl	Total			
Independent Kindergarten	69	4.478	4.114	8.592	440	317	470
Nursery Class	1.968	36.627	32.880	69.507	2.801	2.191	3.369
TOTAL		41.105	36.994	78.099	3.241	2.508	3.839

PRIVATE PRE-SCHOOL 2009-2010

Education Level	Number of School	Number of Student			Number of	Number of	Number of
		Boy	Girl	Total			
Independent Kindergarten	574	8.926	8.056	16.982	2.029	1.379	1.485
Nursery Class	123	2.300	2.010	4.310	2.579	337	276
		11.226	10.066	21.292	4.608	1.716	1.761

PUBLIC+PRIVATE PRE-SCHOOL 2009-2010

Education Level	Number of School	Number of Student			Number of	Number of	Number of
		Boy	Girl	Total			
Independent Kindergarten	643	13.404	12.170	25.574	2.469	1.696	1.955
Nursery Class	2.091	38.927	34.890	73.817	5.380	2.528	3.645
TOTAL		52.331	47.060	99.391	7.849	4.224	5.600

Primary Education

NUMBER OF SCHOOLS – STUDENTS – SCHOOLING RATIO

School Type	Nr of Schools	Number of Students			Schooling Ratio (%)		
		Girls	Boys	Total	Girls	Boys	Total
Primary School	1.360	795.692	852.829	1.648.640	99,42	100,03	99,73
Total	1.360	795.692	852.829	1.648.521			

NUMBER OF TEACHERS

School Type	Permanent		Contractual(4/B)		Paid (4/C)		Total		Condition Based on Norm		
	Female	Male	Female	Male	Female	Male	Female	Male	Norm	Current	Need/Extra
Primary School	25.846	20.309	2.622	1.140			28.468	21.449	62.942	47.797	15.145
Total	25.846	20.309	2.622	1.140			28.468	21.449	62.942	47.797	15.145

General Secondary Education

NUMBER OF SCHOOLS – STUDENTS – SCHOOLING RATIO

School Type	Nr of Schools	Number of Students			Schooling Ratio (%)		
		Girls	Boys	Total	Girls	Boys	Total
Anatolian Fine Arts High School	1	140	71	211	70,16	70,20	70,18
Anatolian High School	88	22.019	24.382	46.401			
Anatolian Teacher High School	5	1.226	1.190	2.416			
Science High School	3	151	321	472			
High School	233	125.900	126.483	252.383			
High School of Social Sciences	1	131	236	367			
Sports High School	1	41	117	158			
High School of Music and Acting	2	35	18	53			
Total	334	149.643	152.818	302.461			

General Secondary Schools

NUMBER OF TEACHERS

School Type	Permanent		Contractual (4/B)		Paid (4/C)		Total		Condition Based on Norm		
	Female	Male	Female	Male	Female	Male	Female	Male	Norm	Current	Need/ Extra
Anatolian Fine Arts High School	33	19							45	47	0
Anatolian High School	1.866	1.631							3.297	3.094	203
Anatolian Teacher High School	79	113							191	174	17
Science High School	13	28							38	33	5
High School	3.625	3.653	187	115					9.560	6.459	3.101
High School of Social Sciences	17	26							42	37	5
Sports High School		11							15	8	7
Total	5.633	5.481	187	115					13.188	9.852	3.336

Vocational Secondary Education

NUMBER OF SCHOOLS – STUDENTS

School Type	Nr of Schools	Number of Students		
		Girls	Boys	Total
High School for Religious Education	26	20.746	10.326	31.072
Technical High School for Boys	72	18.587	83.040	101.627
Technical High School for Girls	57	46.349	8.813	55.162
Vocational High School for Health	7	2.127	444	2.571
Vocational High School for Trade and Tourism	76	42.043	48.818	90.861
Total	238	129.852	151.441	281.293

Vocational Secondary Education

<i>NUMBER OF TEACHERS</i>											
School Type	Permanent		Contractual (4/B)		Paid (4/C)		Total		Condition Based on Norm		
	Female	Male	Female	Male	Female	Male	Female	Male	Norm	Current	Need/Extra
High School for Religious Education	666	775	9	1					1.738	1.284	454
Technical High School for Boys	1.444	3.020	63	42					5.990	3.848	2.142
Technical High School for Girls	1.590	719	32	34					3.067	2.059	1.008
Vocational High School for Health	182	43							238	186	52
Vocational High School for Trade and Tourism	1.390	1.380	75	47					3.887	2.196	1.691
Total	5.272	5.937	179	124					14.920	9.573	5.347

Private Schools

*NUMBER OF SCHOOLS – STUDENTS – SCHOOLING RATIO
ISTANBUL – TURKEY*

		İstanbul			Turkey			State/Private Ratio	
School Type	Nr of Schools	Number of Students			Number of Students			İstanbul	Turkey
		Girls	Boys	Total	Girls	Boys	Total		
Preschool (Independent / Pre-primary class)	574/123	10.066	11.226	21.292	24.233	27.243	51.476	21,40%	5,50%
Primary	236	34.350	38.691	73.041	115.834	136.133	251.967	4,20%	2,30%
General Secondary	256	20.618	25.785	46.403	51.953	64.666	116.619	13,30%	4,80%
Vocational and Technical Secondary	14	343	743	1.086	656	947	1.603	0,30%	0,09%
Total		65.377	76.445	141.822	192.676	228.989	421.665		

İSTANBUL STATE & PRIVATE SCHOOLS 2009-2010

Education Level	Nr of Schools	Number of Students			Nr of Teachers	Nr of Classrooms	Students per Classroom	Nr of Divisions	Students per Division
		Boys	Girls	Total					
Preschool	643	52.331	47.060	99.391	7.849	4.224	24	5.600	18
Primary	1.644	893.669	831.293	1.724.962	61.466	37.565	46	49.979	35
General Secondary	593	178.603	170.261	348.864	17.712	10.199	34	11.855	29
Vocational & Technical Secondary	256	153.038	130.627	283.665	11.514	5.369	53	8.926	32
Total of Secondary	849	331.641	300.888	632.529	29.226	15.568	41	20.781	30
GRAND TOTAL	3.136	1.277.641	1.179.241	2.456.882	93.161	54.829	45	76.360	32

İSTANBUL STATE SCHOOLS 2009-2010

Education Level	Nr of Schools	Number of Students			Nr of Teachers	Nr of Classrooms	Students per Classroom	Nr of Divisions	Students per Division
		Boys	Girls	Total					
Preschool	69	41.105	36.994	78.099	3.241	2.508	31	3.839	20
Primary	1.408	854.978	796.943	1.651.921	52.838	32.544	51	46.125	36
General Secondary	334	152.818	149.643	302.461	11.250	6.786	45	8.935	34
Vocational & Technical Secondary	242	152.295	130.284	282.579	11.315	5.279	54	8.845	32
Total of Secondary	576	305.113	279.927	585.040	22.565	12.065	48	17.780	33
GRAND TOTAL	2.053	1.201.196	1.113.864	2.315.060	75.843	44.926	52	67.744	34

İSTANBUL PRIVATE SCHOOLS 2009-2010

Education Level	Nr of Schools	Number of Students			Nr of Teachers	Nr of Classrooms	Students per Classroom	Nr of Divisions	Students per Division
		Boys	Girls	Total					
Preschool	574	11.226	10.066	21.292	4.608	1.716	12	1.761	12
Primary	236	38.691	34.350	73.041	8.628	5.021	15	3.854	19
General Secondary	259	25.785	20.618	46.403	6.462	3.413	14	2.920	16
Vocational & Technical Secondary	14	743	343	1.086	199	90	12	81	13
Total Secondary	273	26.528	20.961	47.489	6.661	3.503	14	3.001	16
GRAND TOTAL	1.083	76.445	65.377	141.822	17.318	9.903	14	8.616	16

Special Education

NUMBER OF SCHOOLS – STUDENTS – TEACHERS

School Type	Nr of Schools	Number of Students			Number of Teachers			Condition Based on Norm (%)		
		Girls	Boys	Total	Female	Male	Total	Norm	Current	Need/Extra
Mentally Disabled (Primary School)	8	113	177	290	76	64	140	297	111	186
Mentally Disabled (İş Okulu-Meslek Lisesi)	2	271	667	938	16	15	31	83	19	64
Blind (Primary School)	2	122	161	283	38	24	62	87	52	35
Hospitalized (Primary School)	5	0	4	4	6	3	9	10	9	1
Hearing Impaired (Primary School)	7	452	602	1.054	84	72	156	191	118	73
Hearing Impaired (Vocational High School)	2	161	187	348	10	13	23	41	16	25
Autistic (Education Center – Primary Level)	9	91	345	436	89	41	130	409	83	326
Mentally Disabled (Training Practice School – Primary Level)	16	473	821	1.294	122	83	205	511	129	382
Mentally Disabled (On the Job Training Centers)	1	180	335	515	7	3	10	21	3	18
Students with adaptation problems	1	0	39	39	2	9	11	15	8	7
Genius or Over Skilled/IQ	2	371	251	622	17	13	30	57	0	57
TOTAL	55	2.234	3.589	5.823	467	340	807	1.722	548	1.174

Professional Development

- **In service training courses and seminars:**
 - * **Orientation In-service training courses:** Newly recruited teachers and staff
 - * **Central:** planned and organized by the Ministry
 - * **Local:** planned and organized by the provincial and subprovincial directorates
- **Academic studies:** Staff is encouraged to attend the higher education programs, and supported by laws and legislations.

In-Service Trainings

2007	Edu.& Adm. Staff	Support staff	total
Course	25.689	102	25.791
Seminar	68.952	0	68.952
Total	94.641	102	94.743
2008	Edu.& Adm. Staff	Support staff	total
Course	19.462	0	19.462
Seminar	55.474	0	55.474
Total	74.936	0	74.936
2009	Edu.& Adm. Staff	Support staff	total
Course	10.229	422	10.651
Seminar	67.067	0	67.067
Total	77.296	422	77.218

Career Levels...

- **Expert teacher** : at least 8 years of teaching experience
 - Master's degree or passing the national exam for career steps
- **Head teacher** : at least 10 years of teaching experience
 - PhD degree or passing the national exam for career steps

Teachers in Career Levels

Career Level	Number of Teachers (2009-2010)
Head Teacher	48
Expert Teacher	7.655
Teacher	69.469
Newly Recruited Teacher	1.158



THANKS

